



S100A6 (ABT-S100A6) mouse mAb

Catalog No	YP-Ab-15435
Isotype	IgG
Reactivity	Human; Predict react with Mouse, Rat
Applications	IHC;IF
Gene Name	S100A6 CACY
Protein Name	S100A6
Immunogen	Synthesized peptide derived from human S100A6
Specificity	This antibody detects endogenous levels of human S100A6. Heat-induced epitope retrieval (HIER) TRIS-EDTA of pH8.0 was highly recommended as antigen repair method in paraffin section
Formulation	Liquid in PBS containing 50% glycerol, 0.5% BSA and 0.02% sodium azide.
Source	Mouse, Monoclonal/IgG1, Kappa
Purification	The antibody was affinity-purified from mouse ascites by affinity-chromatography using specific immunogen.
Dilution	IHC-p 1:100-500. IF 1:50-200
Concentration	1 mg/ml
Purity	≥90%
Storage Stability	-20°C/1 year
Synonyms	
Observed Band	
Cell Pathway	Nucleus envelope. Cytoplasm. Cell membrane; Peripheral membrane protein; Cytoplasmic side.
Tissue Specificity	Brain,Fibroblast,Placenta,Platelet,
Function	induction:Preferentially expressed when quiescent fibroblasts are stimulated to proliferate. It is inducible by growth factors and overexpressed in acute myeloid leukemias.,miscellaneous:This protein co-purified with the prolactin receptor.,PTM:The N-terminus is blocked.,similarity:Belongs to the S-100 family.,similarity:Contains 2 EF-hand domains.,subunit:Homodimer, antiparallel. Interacts with SUGT1.,
Background	S100 calcium binding protein A6(S100A6) Homo sapiens The protein encoded by this gene is a member of the S100 family of proteins containing 2 EF-hand calcium-binding motifs. S100 proteins are localized in the cytoplasm and/or nucleus of a wide range of cells, and involved in the regulation of a number of cellular processes such as cell cycle progression and differentiation. S100 genes include at least 13 members which are located as a cluster on chromosome 1q21. This protein may function in stimulation of Ca ²⁺ -dependent insulin release, stimulation of prolactin secretion, and exocytosis. Chromosomal rearrangements

and altered expression of this gene have been implicated in melanoma. [provided by RefSeq, Jul 2008],

matters needing attention

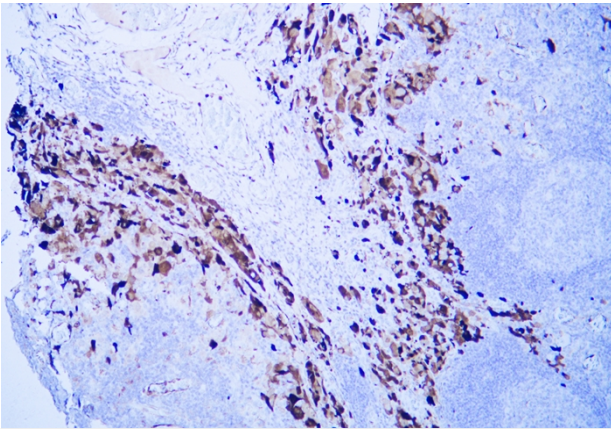
Avoid repeated freezing and thawing!

Usage suggestions

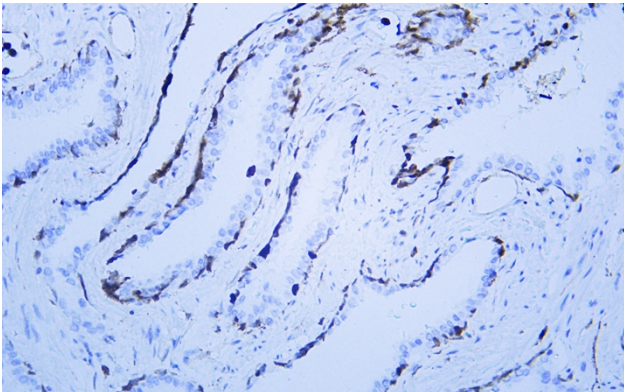
This product can be used in immunological reaction related experiments. For more information, please consult technical personnel.



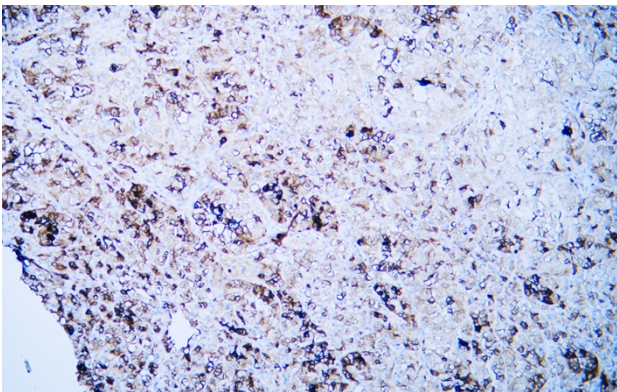
Products Images



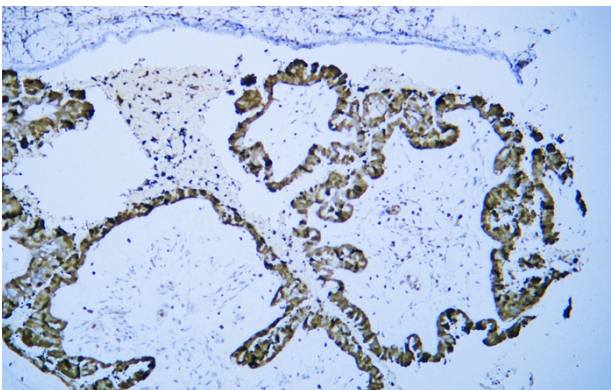
Human malignant melanoma tissue was stained with Anti-S100A6 (ABT-S100A6) Antibody



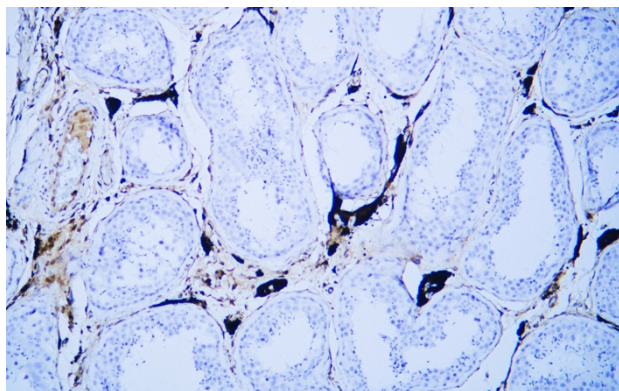
Human prostate tissue was stained with Anti-S100A6 (ABT-S100A6) Antibody



Human renal clear cell carcinoma tissue was stained with Anti-S100A6 (ABT-S100A6) Antibody



Human serous papillary adenocarcinoma of ovary tissue was stained with Anti-S100A6 (ABT-S100A6) Antibody



Human testis tissue was stained with Anti-S100A6 (ABT-S100A6) Antibody